



Leos Janacek
Ostrava Airport



About the Airport

IN THE HEART OF EUROPE

Ostrava Leos Janacek Airport is the largest regional airport in the Czech Republic with both regularly scheduled domestic and international services.

The Moravian Silesian region Government has been the owner of Ostrava Leos Janacek Airport since July 1, 2004. In November 2006, the airport was renamed after the composer Leos Janacek. The operator of the airport is Letiště Ostrava, a.s., a joint stock company.

The airport is conveniently located in the center of Europe, between the Czech Republic, Slovakia and Poland, about 20 km from Ostrava, the capital of the Moravian Silesian region, and provides an important point of entry into Central and Eastern Europe.



Air distances from Ostrava Leos Janacek Airport:

Prague	273 km
Vienna	220 km
Katowice	72 km
Bratislava	200 km
Frankfurt	687 km
Warsaw	330 km
Moscow	1,473 km
Kiev	884 km



Catchment Area

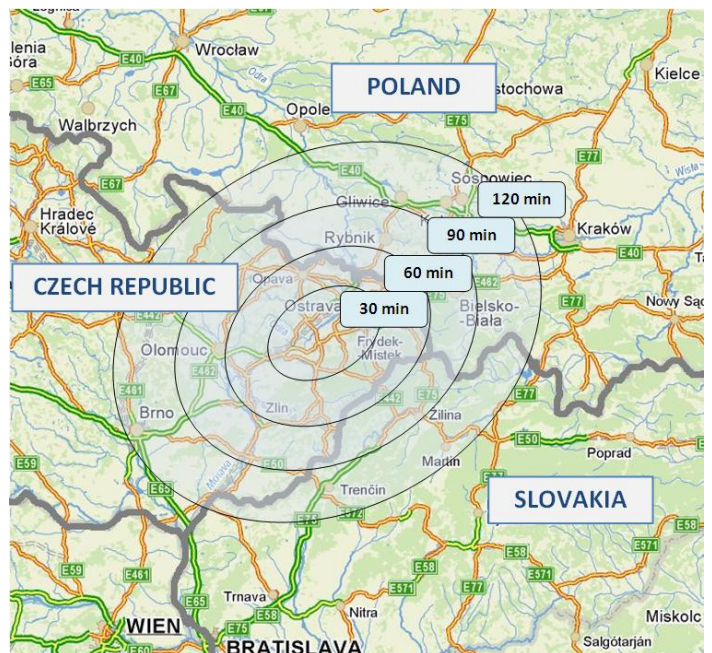
The airport's catchment area covers the Moravian Silesian, Olomouc and Zlin regions of the Czech Republic, Southern Poland, and the north-western part of Slovakia. Some 5.9 million people live within a 90 minute drive of the airport.

Catchment area by country (120 minutes)

Czech Republic	3.6 mil = 42 %
Poland	4.4 mil = 51 %
Slovakia	0.6 mil = 7 %

Catchment area by number of inhabitants

30 minutes	0.8 mil
60 minutes	2.9 mil
90 minutes	5.9 mil
120 minutes	8.7 mil



The airport has a great potential for growth thanks to a large number of business enterprises and foreign investors present in the region. Over the past few years, the Moravian Silesian region has seen rapid economic development which is evident in the most of foreign investors operating in the region. In addition, many large companies are based in Poland and Slovakia.

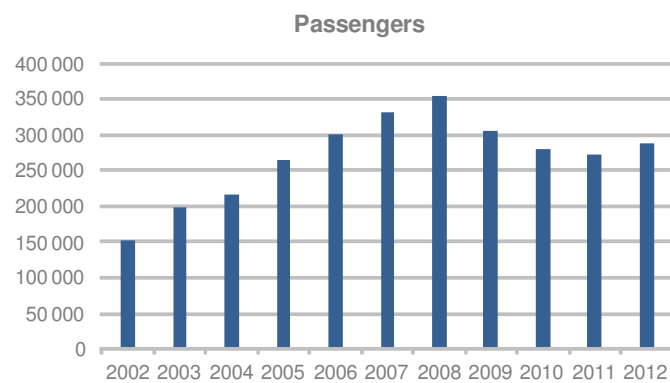
Successful Investors in Moravian-Silesian Region

	Company	Investor	Industry	Capital stock	No. of employees
	Hyundai Motor Manufacturing Czech	Hyundai (Korea)	Automotive	€ 463 366 667	2000 - 2499
	ArcelorMittal Ostrava	ArcelorMittal (India)	Metallurgy	€ 413 008 567	5000 - 9999
	Tatra	Terex Corporation (USA)	Automotive	€ 68 991 753	1500 - 1999
	Teva Czech Industries	Teva Pharmaceutical Industries (Izrael)	Pharmaceutical	€ 83 333 333	1000 - 1499
	EVRAZ VÍTKOVICE STEEL	EVRAZ GROUP (Russia)	Metallurgy	€ 86 666 667	1000 - 1499
	PLAKOR Czech	PLAKOR (Korea)	Automotive	€ 26 822 167	250 - 499
	Steeltec CZ	Gardena Manufacturing (Germany)	Engineering	€ 1 621 900	350
	BEHR Ostrava	Behr (Germany)	Automotive	€ 12 833 333	200 - 249
	Brose CZ	Brose Group (Germany)	Automotive	€ 300 000	1000 - 1499
	ASUSTek Computer		IT	€ 179 400	
	Visteon-Autopal	Visteon International Holdings (USA)	Automotive	€ 333 333	1000 - 1499
	Continental Automotive Systems Czech Republic		Automotive	€ 10 995 333	2000 - 2499
	TietoEnator Czech	Tieto Enator (Finland/Sweden)	IT	€ 166 667	
	Skanska CZ	Skanska AB (Sweden)	Construction		
	CTP Invest	CTPark Network (Netherlands)	Property development	€ 333 400 000	25 - 49
	Dalkia Česká republika	Veolia Environnement (France)	Energy services	€ 104 881 548	1500 - 1999
	DHL Express (Czech Republic)	DHL International (Germany)	Express logistics	€ 1 166 667	1500 - 1999
	Bang & Olufsen	Bang & Olufsen (Denmark)	Consumer electronics	€ 6 260 000	100 - 199
	Siemens	Siemens Aktiengesellschaft (Germany)	electronics		
	Hayes Lemmerz Autokola	Hayes Lemmerz (USA) + (Germany)	Automotive		

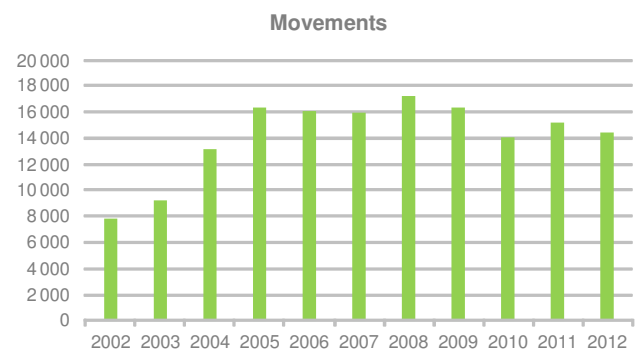


Airport Traffic

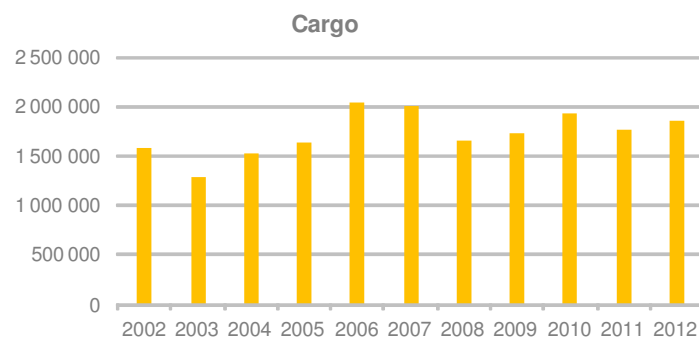
Growth in the number of passengers

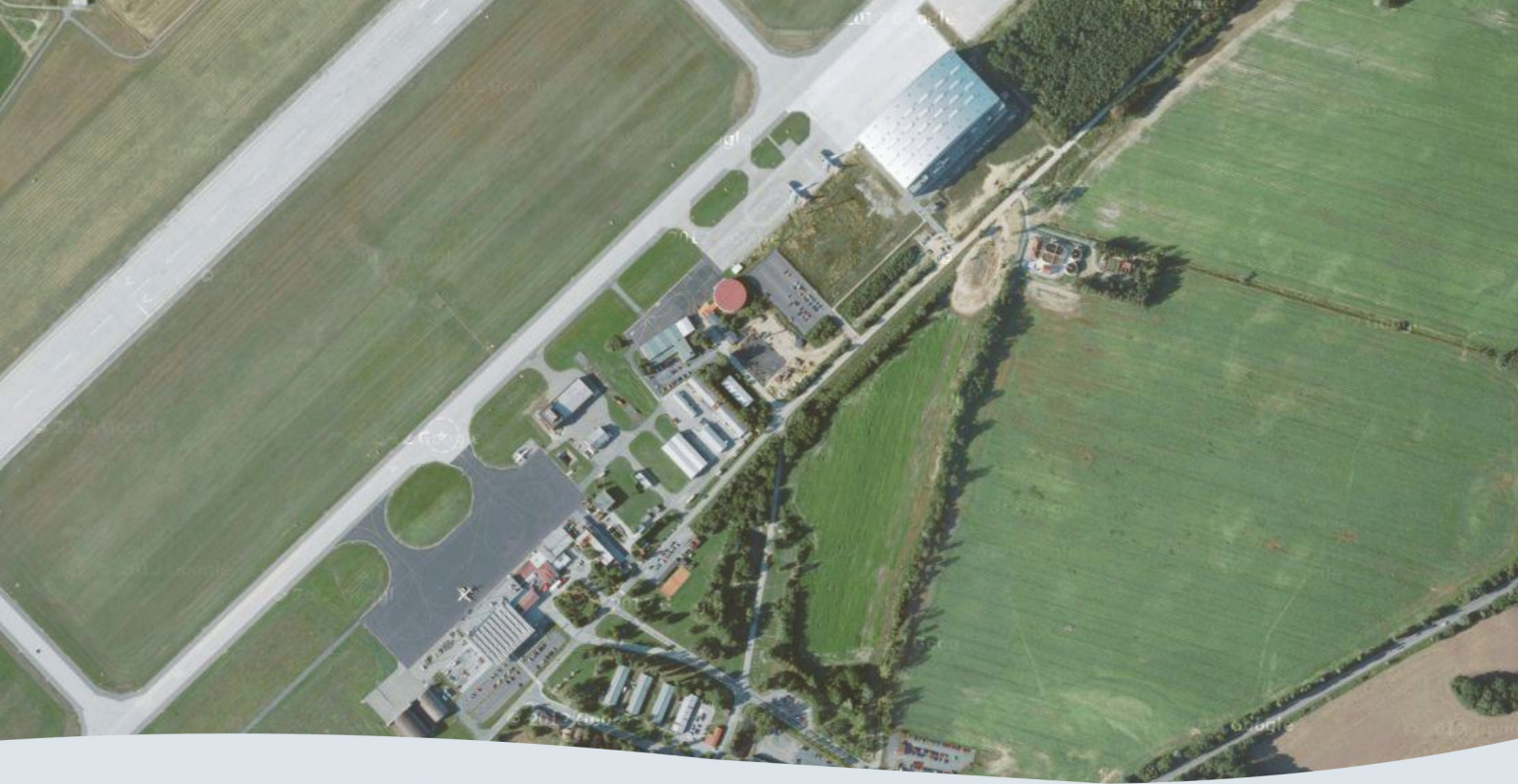


Growth in the number of flights



Growth in cargo (kg)





Technical Specification

RWY 04/22 4E

3500 M x 63 M

PCN 50/R/B/W/T

ILS CAT II/RWY 22 → III/A

VOR/DME

No noise / night / slot restrictions

H24 operations

Reference Point Coordinates and Location

49 41 46 N 018 06 39 E

center RWY 04/22

Distance and Direction from the City

20 km SW from the main railway station in Ostrava

Elevation and Reference Temperature

844 ft / 257 m, 23.5°C - JUL

Operation hours H24

No operational or noise restrictions

Airport Characteristics

Number of runways: 1 (04-22)

- runway length: 3 500 m

- runway width: 63 m

Airport approved for LVO - CAT II (awaiting CAT IIIa)

Number of passenger terminals: 1

Number of cargo terminals: 1

Handling of all cargo aircraft types up to B747 and An-124

Number of Aircraft Stands

7 aircraft stands at the Central Apron

5 x ACFT CAT C

2 x ACFT CAT D

South Apron

3 x ACFT CAT C

3 x ACFT CAT D or 1x ACFT CAT D and 1 x ACFT CAT E

GA Apron

13 x ACFT CAT A or 9 x ACFT CAT A and 3 x ACFT CAT B

Aircraft Ground Handling Services

Cargo handling equipment, refueling and deicing services available

Fuel type: Jet A1, AVGAS 100LL

Fuel supplier: Shell, Lukoil

Hangar space for visiting aircraft limited

JOB AIR – TECHNIC - Maintenance Capability

Maintenance of aircraft types Saab 340, 2000, Boeing 737 classic, Boeing

737 NG, L-410, A320 family, up to C2 maintenance

Hangar able to accommodate aircraft up to Boeing 747 size



Cargo Base for you

READY TO EXPAND?

The airport has excellent preconditions for the development of cargo transportation. Its strategic location in the heart of Europe on the north-south traffic link, the technical characteristics of the runway and easy accessibility of the airport coupled with the convenient transportation infrastructure connecting the road, rail and air services make Ostrava Leos Janacek Airport a partner in cargo transportation to be reckoned with.

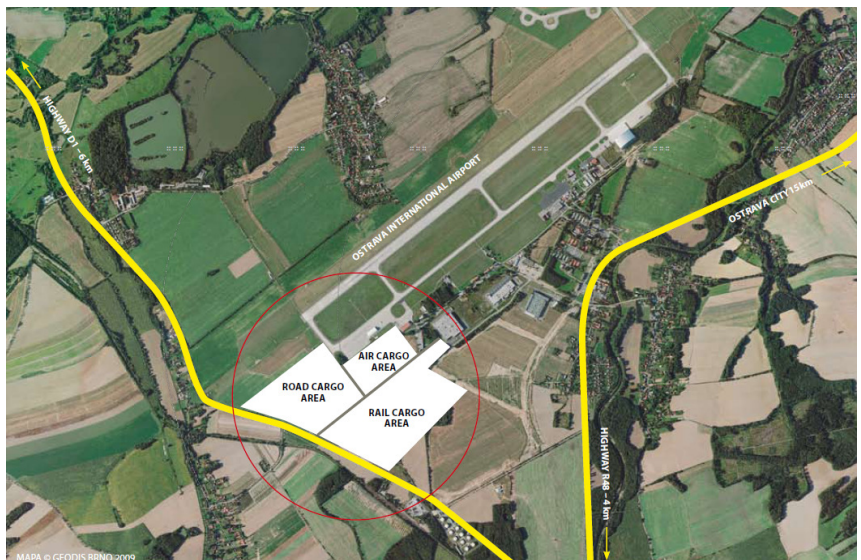
The airport is located in an industrial area and in its vicinity there are a large number of industrial parks and important business establishments. Part of the airport is a Free Zone and a logistics center which is under construction. The airport is easily accessible from the D1 Motorway or the R48 high-speed road. Moreover, a rail link is under construction which will terminate directly at the departure hall.

- Located in the centre of Europe
- Excellent technical characteristics of the runway – RWY 3,500 m x 63 m
- CAT II → CAT IIIA
- No slot / night / noise restrictions
- H24
- Logistics center integrating air, rail and road services
- Public logistics center
- 18 industrial parks in the area
- Aircraft Maintenance Center
- New cargo terminal
- Vast economic potential of the area



Cargo Facility

- **Aircraft handling without dimension limits (including B747, An124, IL-76)**
- Large dispatch area adjacent to the cargo terminal
- Terminal dimensions: 11,000 m²
- Direct access to the ramp
- All necessary cargo handling equipment available (including x-ray machine 145 x 180)
- Full cargo handling, customs clearance / IATA IMP standard / landside logistics
- Ramp handling: full handling for aircraft up to Boeing 747F
- Aircraft stand capacity: sufficient number of stands for handling and parking all types of aircraft, including 2 stands for B747 and 3 stands for B737
- Total storage capacity of 12,000 square meters
- Storage / cargo handling areas let





Multimodal Logistic Center

UNIQUE CONNECTION OF ROAD, RAILWAYS AND AIR TRANSPORT

Air cargo terminal, railway container terminal, cross-dock halls, storage halls, industrial halls

PROJECT SPECIFICATION

Site area in total	55,000 sqm
Gross leasable area of storage and office spaces aprox.	30,000 sqm
highway exit D1 (Prague – Brno – Ostrava)	6 km
highway exit R48 (Olomouc – Těšín – Bialsko Biala)	4 km
Ostrava City – the capital of Moravia-Silesia region	20 km
catchment area	20 million consumers

- 2 warehouse buildings totalling approximately 30,000 sqm of A category storage and office space
- Building A - „Air Side / Land Side“ Air Cargo Terminal serving for short period air freight consolidation with gates to airport apron
- Building B – “Land Side” Warehouse serving for medium and long term stock-keeping enabling last minute transport of air freight for consolidation
- Clear height under the load-bearing construction – 6.6 m in Building A, 10 m in Building B
- Prefabricated concrete load-bearing construction with 12 m x 24 m grid
- 16 sectors a 24 x 60 m = 1,440 sqm (which is minimum GLA of storage space)
- Flexible layout with possibility to merge two or more sectors together according to tenant needs
- GLA of storage space in total – up to 23,000 sqm
- GLA of office space in total – up to 7,000 sqm
- Sufficient number of parking lots for both trucks and cars



Largest Aircraft Servicing and Maintenance Facility in Central and Eastern Europe

JOB AIR TECHNIC offers aviation companies a wide range of services ranging from base maintenance to aircraft modification. The sheer size of the hangar, its configuration and the dimensions of the doors are designed to accommodate two large aircraft of Boeing 747 type and two medium sized aircraft of up to the size of Boeing 737, which has not been possible in Europe until now.

The facility will be connected with main transport hubs ensuring the speedy delivery of spare parts. The single span 11,680 m² hangar is intended for maintenance of 2 wide-body or up to 6 narrow-body or 1 wide-body and up to 4 narrow-body aircraft simultaneously.

Key activities

- MRO services
 - Line maintenance
 - Heavy airframe maintenance
 - Component maintenance
 - Airframe modifications
 - Aging and corrosion prevention programs
 - Airworthiness Directives accomplishment, mandatory and optional modifications
 - Major repairs including accident damage
 - Aircraft conversions
 - Avionics upgrade
- Technical staff training

Aircraft type capability

- Boeing 737 classic, Boeing 737 NG
- Saab 340, 2000
- L-410
- A320 family, up to C2 maintenance

JOB AIR – TECHNIC
www.jobair.eu
Phone +420 556 789 111
Fax +420 556 789 122
E-mail jobair@jobair.cz



New Aircraft Painting Shop

- Up to B737 / A321

JOB AIR – TECHNIC

www.jobair.eu

Phone +420 556 789 111

Fax +420 556 789 122

E-mail jobair@jobair.cz





Planned in the Near Future

Construction of a railway terminal in 2014

ILS CAT III/A

Multimodal logistic center

Multi-level parking facility

Construction of an administration and business center

Terminal – second stage



Three Regions – One Airport

Regions with the Highest Economic Potential

The airport is situated in the Moravian Silesian region and within the Czech Republic it is also used by inhabitants of the neighboring Olomouc and Zlin regions.

Picturesque mountains, ancient monuments, various cultural events, excellent opportunities for sports and recreation as well as relaxation and endless parties – all this and more is offered by the three Moravian regions.

Moravia is strategically located and intersects two trade and traffic routes running in both the east-west and north-south directions. The former extends from Germany through Poland to Ukraine and continues on to Russia while the latter runs from Scandinavia through Poland to Austria and Italy. The region borders on Poland's Silesian and Opole provinces and the Zilina region in Slovakia.

The Moravian Silesian region, a major center of cultural, social and business life, has seen a steady increase in its standard of living, an improvement in environmental standards, a wider range of housing options as well as more efficient road and rail networks. Furthermore, the region strives to increase its attractiveness to both Czech and foreign visitors and actively promotes tourism. As a result, Moravia has become an increasingly popular tourist destination priding itself on a number of locations included in the UNESCO World Cultural and Natural Heritage List.

Highlights of the three Moravian regions:

- Moravian Silesian region – country's most populous region
- Large number of foreign investors
- High concentration of urban areas
- Highest concentration of spa resorts in the country, 13 overall
- Museums, theaters, galleries, operas, philharmonics, festivals
- Venues for hosting major sporting events and championships
- Countless cultural attractions and events
- Over 306,000 tourists coming annually
- Over 510,000 businesses within the airport's catchment area



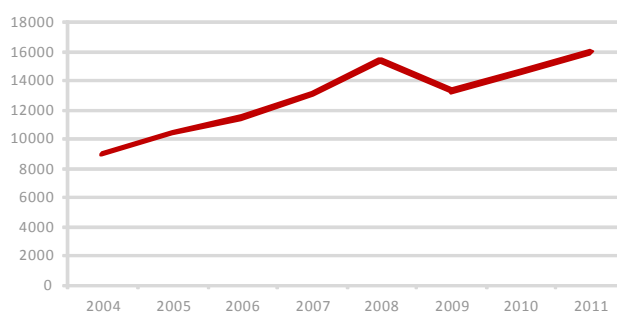
Economic Development

In terms of the Czech Republic's gross domestic product (GDP), the Moravian Silesian region ranks as the country's third largest contributor to GDP, with the region's share amounting to 9,7 %.

Region's GDP in current prices

in million Euros

2004	2005	2006	2007	2008	2009	2010	2011
8,892	10,374	11,524	12,986	15,308	13,310	14,630	15,948

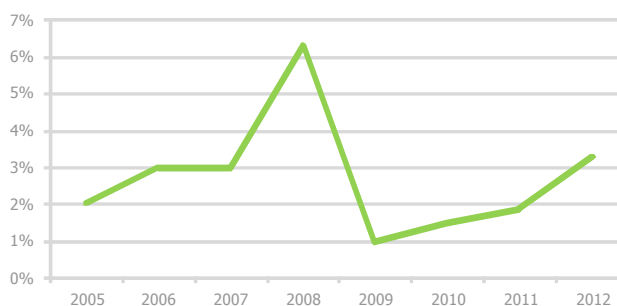


Source: ČSU

Inflation

The inflation rate remains stable.

2005	2006	2007	2008	2009	2010	2011	2012
1.9%	2.5%	2.8%	6.3%	1%	1.5%	1.9%	3.3 %



Source: ČSU



Trade

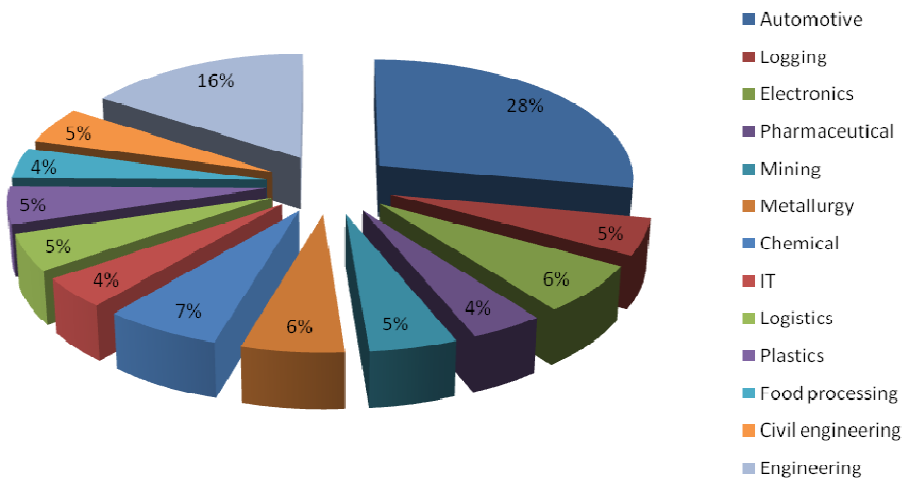
The region, ranked among Central Europe's most important industrial regions, is home to a large number of companies specializing in advanced technologies and hi-tech products as well as traditional crafts. Local companies have achieved considerable success in areas such as IT, electronics, or electrical and automotive engineering.

Ostrava Leos Janacek Airport is located directly in the Ostrava – Mosnov industrial zone which has an area of 500 acres (200 hectares). Moreover, the region offers another 20 functional industrial parks while 29 more are being developed for both domestic and foreign investors.





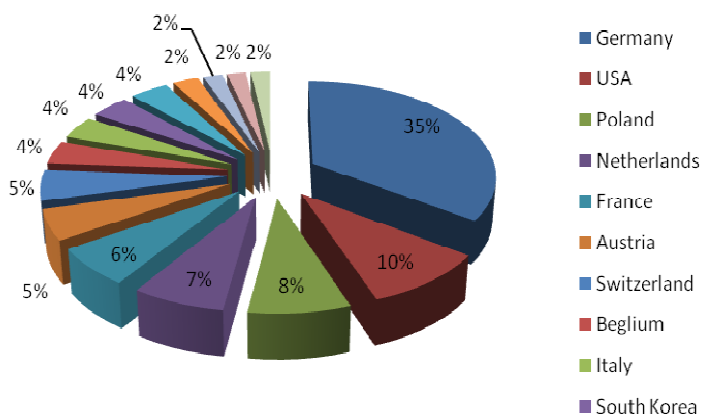
All in all, more than 170 foreign investors from 28 countries conduct business in the Moravian Silesian region.



Region highlights:

- Strategic location in the triangle between Poland and Slovakia
- Excellent starting point for creating transportation links with Eastern Europe
- Numerous production areas
- High-quality technical infrastructure
- 16 universities and colleges
- Industrial zones as well as science and technology parks
- Excellent transportation infrastructure
- Transit corridor - rail and road junction
- Rich cultural life (opera, philharmonic, theaters and galleries)
- Countless leisure time and sporting activities to choose from

Investing countries:





Transport Links

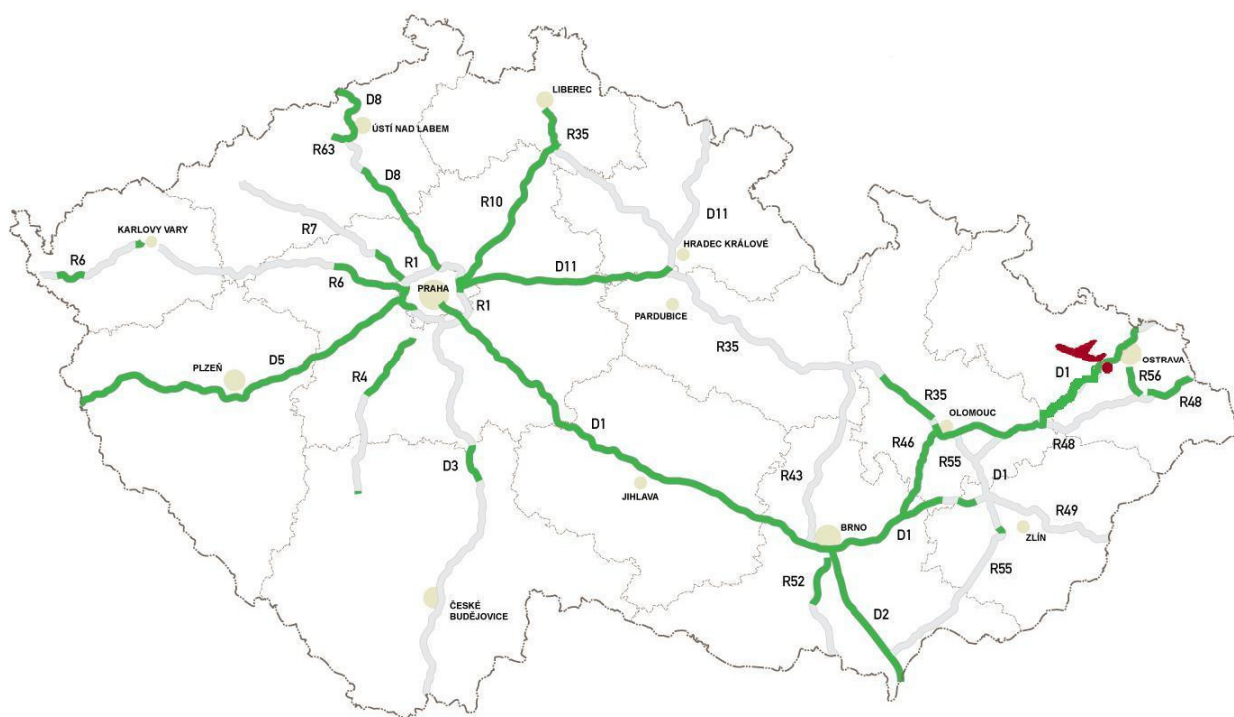
Thanks to its position near the border of Poland and Slovakia, the Moravian Silesian region intersects major transport routes.

The VI.B multi-modal corridor intersecting Katowice, Ostrava and Brno runs through the region. The airport is easily accessible from the newly opened D1 motorway, part of the Trans-European Motorway in the north-south direction connecting the Baltic Sea with the Balkan Peninsula. D1 Motorway connects Ostrava with Prague, the Czech Republic's capital, and also provides an important link between the south and north of Central Europe while connecting Austria and Poland.

Yet another important international route runs along Road I/11 via Cesky Tesin, Trinec, Mosty u Jablunkova and the state border with the Slovak Republic, which is part of the E75 Route from Belgrade to Gdansk.

In the near future the airport will be linked to the rail corridor. The rail link, which will terminate directly at the departure hall, is under construction. It is expected to be completed in 2013.

With the D1 Motorway and the rail link completed, the airport will become a major transport hub and the only place in the Czech Republic that integrates air, road and rail services.





Tourism and Culture

North Moravia and Silesia – Region of Contrasts and Opportunities

The region offers a variety of spectacular natural attractions, numerous cultural, architectural, religious and technical monuments, as well as a wide range of sports and recreational facilities.

Visitors have a large selection of cultural and sporting events to choose from, e.g. the Golden Spike meet, Janacek's May International Music Festival, Colours of Ostrava music festival, Dvorak's Olomouc, Zlin Film Festival, Folklore Without Frontiers and many more. Visitors may also choose to experience the world-famous Stodolni street with over 70 bars and restaurants.

- 13 spa resorts
- 7 golf courses
- Ski resorts
- Hiking and cycling trails
- Castles and chateaux
- Technical monuments
- Unique folklore and cuisine

Major international cultural and sporting events within the catchment area of the airport

		Average number of visitors	Held in
Snow Kingdom, Pustevny	An international (ice and snow) sculpture festival.	21 000	January
Ostrava Golden Spike	An international athletic meet held annually since 1961. Ostrava's Golden Spike has now become part of the IAAF's Super Grand Prix annual series with athletes from 150 countries.	22 000	May
Janacek's May International Music Festival	The Czech Republic's and Europe's largest and most prestigious music festival bearing the name of Leoš Janáček.	7 500	May
Flora Theatre Festival	An international film festival.	9 000	May
Dvořák's Olomouc	An international festival of classical music.		May
CIOFF International Folklore Festival, Frýdek-Místek	A non-competitive festival featuring both Czech and foreign folklore groups.	11 000	June
Davis Cup	A premier international team event in men's tennis held annually as an unofficial world championship.	13 000 spectators a day	June
Colours of Ostrava	An annual multi-genre music festival featuring world music, held in the centre of Ostrava.	26 000	July
Liptál Festivities	An international folklore festival featured prominently in the list of IOV and CIOFF events.	11 000	July
Rožnov Festivities	An international folklore festival held at the Wallachian Open Air Museum in Rožnov pod Radhoštěm.	10 100	July
Janáček's Hukvaldy International Music Festival	An international music festival held in the beautiful setting of Hukvaldy's deer park.	16500	July - August
Summer Shakespeare Festival, Ostrava	A festival held at Slezskoostřavský Castle.	13 000	July - August
Barum Czech rally, Zlín	A traditional car rally.	278 000	August
Highlander's Festival	The largest cultural and folklore festival in the Zaolzie area, drawing thousands of visitors each day, featuring folklore ensembles from Silesia, Bohemia, Moravia, Slovakia, Poland, as well as other countries.		August
Jánošík's Ducat	An international festival of Slovak folklore held in the Czech Republic.	10 000	August
Luhačovice Cultural Summer, Luhačovice	Music and theatre festivals.	21 000	May - September
NATO DAYS	Central Europe's largest event is hosted annually by Ostrava Leos Janacek Airport. The event is dedicated to aviation, military and security equipment and its programme includes workshops, presentations and demonstrations, including displays of heavy military, law enforcement and emergency response equipment.	225 000	September
Slovácko Festival of Wine and Open Monuments, Uherské Hradiště	A unique cultural event with a two-day programme showcasing the traditional folk culture of the Slovácko region.	72 000	September
International Festival of Outdoor Films	The Czech Republic's largest touring festival showcasing films dedicated to adventure, extreme sports and exploration.	24 500	October - December
Saint Nicholas Fair, Valašské Klobouky	Saint Nicholas Fair featuring traditional handicrafts and art, a display of regional varieties of fruit as well as an exhibition featuring works of local artists.	25 300	December



Moravia is renowned for its fine spa resorts and sanatoriums and offers visitors as many as thirteen spa towns to choose from, e.g. Luhacovice Spa, Beskydy rehabilitation center in Celadna, Klimkovice Sanatorium, Darkov Spa, Losiny Spa or Priessnitz healing spa in Jeseniky. The region is blessed with great natural beauty being home to a number of protected landscape areas and national nature reserves, numerous natural monuments, chateaux, castles and ruins as well as natural caves.

The Moravian Silesian region also hosts sporting events of international importance and offers, among others, excellent opportunities to enjoy golf. Visitors can choose from various levels of difficulty ranging from family friendly to championship caliber golf courses.

The area surrounding the airport is a much sought after tourist location. The Czech part of the airport's catchment area is visited by over 306,000 tourists annually while the Slovak part attracts approx. 340,000 foreign visitors every year. A majority of the visitors come from Germany, Poland and Russia. Italian tourists also represent a significant percentage of foreign tourists visiting the area.

Visitors arriving in the Moravian Silesian, Olomouc and Zlin regions by nationality (per year)

Country	Number of visitors	Average expenditures / day (EUR)	Average length of stay
Slovakia	63,376	66	5
Germany	51,306	79	4
Poland	37,221	54	4
Russia	25,708	166	9
Austria	13,628	83	3
Italy	11,260	113	4
United Kingdom	8,996	111	4
Netherlands	8,629	83	6

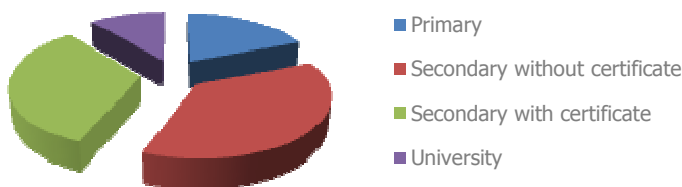
Country	Number of visitors	Average expenditures / day (EUR)	Average length of stay
Lithuania	8,157		
France	7,851	102	5
Ukraine	7,669	114	12
United States	7,244	140	7
Latvia	4,646		
Hungary	4,609	87	4
Belgium	3,312	113	4
Slovenia	2,934		
South Korea	2,433	122	7



Educational System and Education

The region has a total of 459 primary schools with 106,883 pupils, 156 secondary schools with 71,926 students, 2 academies of music with 518 students, 11 higher education institutions with 2,443 students and 4 universities with 41,911 students. Among the most important universities are the VSB - Technical University of Ostrava and the University of Ostrava, which will merge in the near future. This will create the third largest university in the country.

Education structure

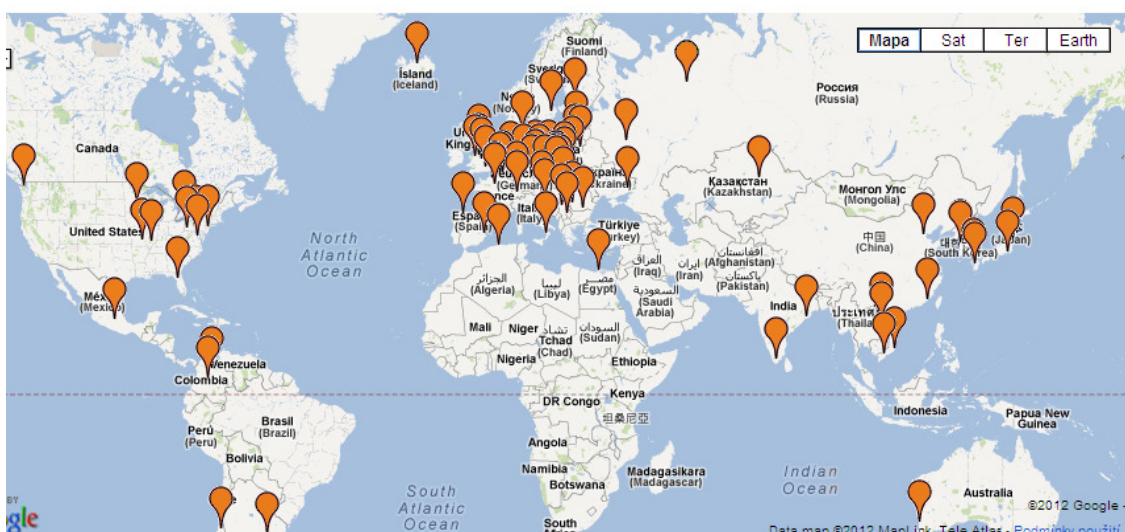


Primary	19 %
Secondary without certificate	37.4 %
Secondary with certificate	32.8 %
University	10.7 %

VŠB-Technical University of Ostrava (VŠB-TUO)

- more than 160 years of existence
- VŠB-TUO itself carries out or participates in many important projects in research and development
- VŠB-TUO cooperates with many domestic and foreign universities and the private sector

VSB-Technical University of Ostrava has cooperative agreements with universities and research oriented institutions around the world. These agreements provide the framework for cooperation in the areas of student and staff mobility, as well as collaboration in matters of pedagogy, research and development, publication, and scientific meetings and symposia.



Real output in the form of applications, patents and utility models is handled by the commercialization of research results. Support for new entrepreneurs and researchers is then provided by the business incubator. Both offices are part of the Support Centre for Innovation. The Project Support Center helps with administrative assurance of individual projects.



CONTACTS

Ostrava Airport

Ostrava Airport 401

742 51 Mosnov

Czech Republic

Phone: +420 597 471 117

Fax: +420 597 471 105

E-mail: airport@airport-ostrava.cz

www.airport-ostrava.cz

Leos Janacek
Ostrava Airport